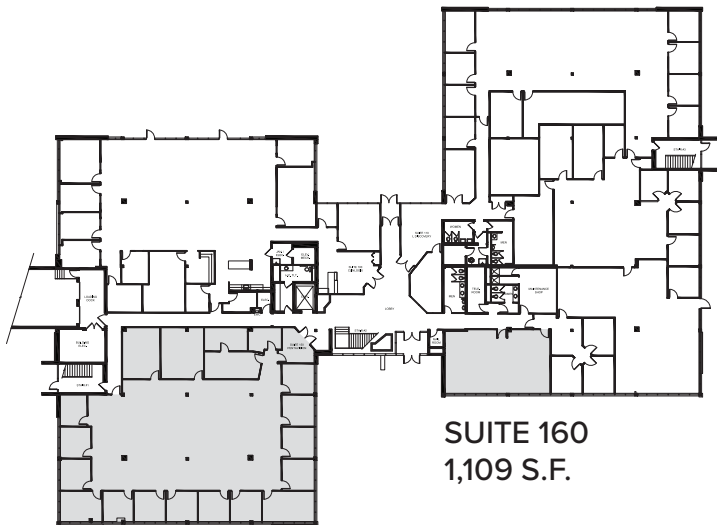


Ambler Collection

BROOKWOOD PHILADELPHIA PORTFOLIO

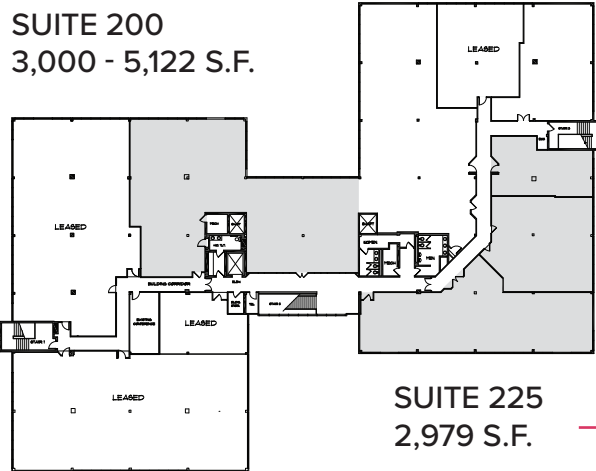
321 NORRISTOWN ROAD

Ambler, PA 19002



SUITE 150
7,130 S.F.

SUITE 160
1,109 S.F.



SUITE 200
3,000 - 5,122 S.F.

SUITE 220
2,903 S.F.

SUITE 225
2,979 S.F. → **5,882 S.F. CONTIGUOUS**

BUILDING HIGHLIGHTS

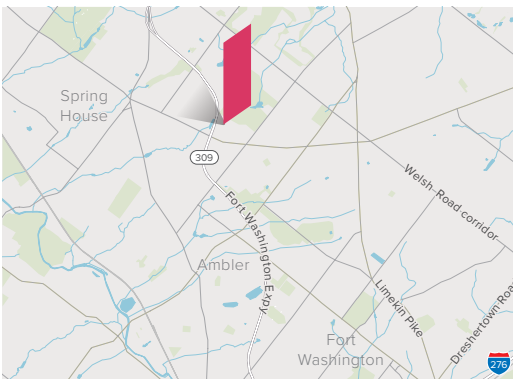
- Current availability: ranging from 1,109 s.f. - 7,130 s.f.
- Building size: 54,236 s.f.
- Parking: 5.46/1,000
- New, floor-to-ceiling glass on the second floor
- Ample daylight throughout the interior
- Dedicated outdoor spaces
- Shared access to café, conference center and fitness facility

FOR LEASING INFORMATION

Adam Shute
Executive Vice President
+1 610 249 2272
adam.shute@jll.com

Patrick Grenko
Executive Vice President
+1 215 399 1831
patrick.grenko@jll.com

Jones Lang LaSalle Brokerage, Inc.
550 E. Swedesford Road, Suite 260,
Wayne, PA 19087
+1 610 249 2255



Although information has been obtained from sources deemed reliable, neither Owner nor JLL makes any guarantees, warranties or representations, express or implied, as to the completeness or accuracy as to the information contained herein. Any projections, opinions, assumptions or estimates used are for example only. There may be differences between projected and actual results, and those differences may be material. The Property may be withdrawn without notice. Neither Owner nor JLL accepts any liability for any loss or damage suffered by any party resulting from reliance on this information. If the recipient of this information has signed a confidentiality agreement regarding this matter, this information is subject to the terms of that agreement. ©2023. Jones Lang LaSalle Brokerage, Inc. All rights reserved.

